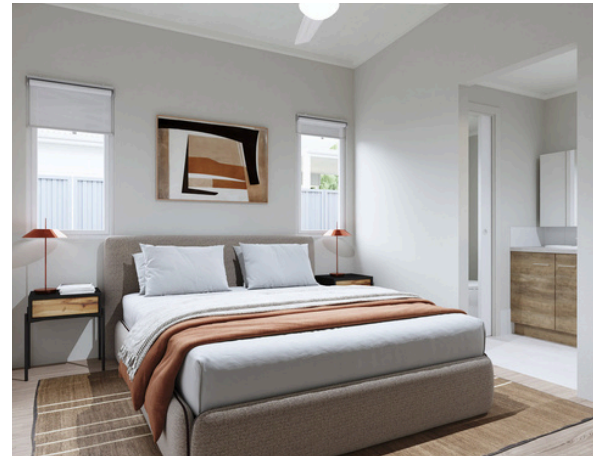


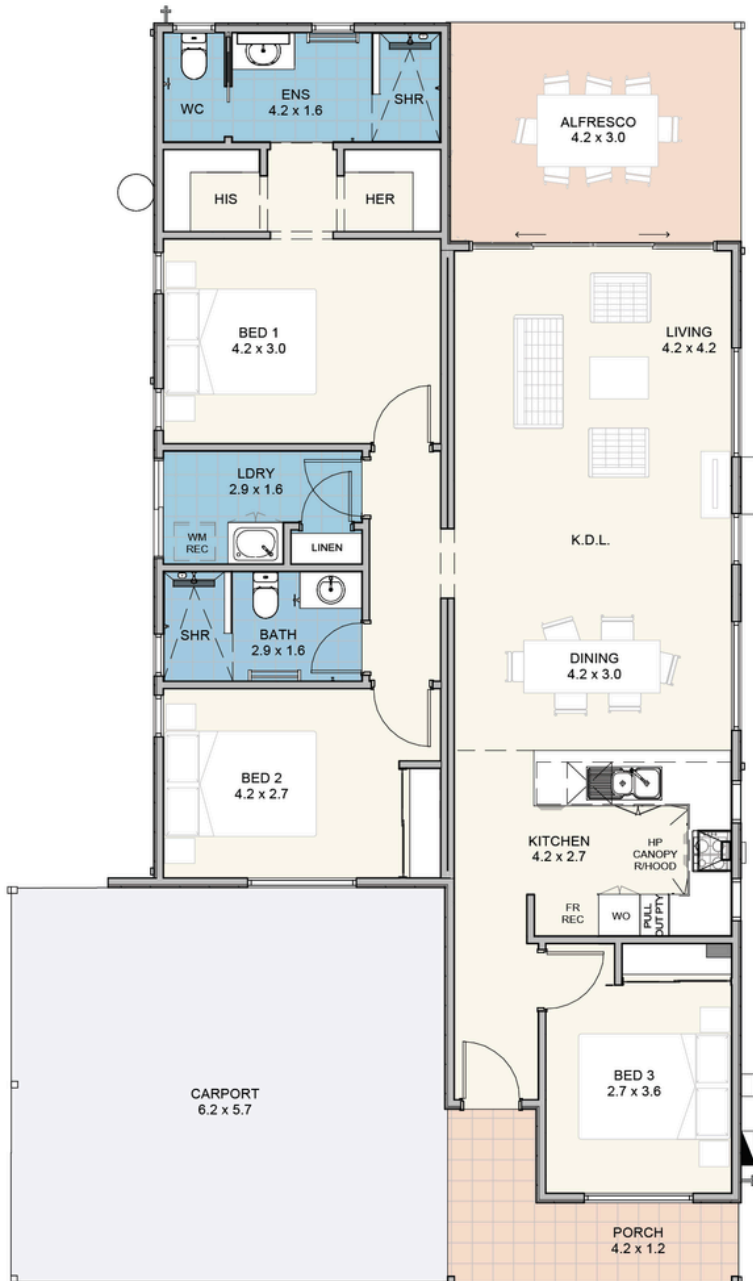
The Jarrah



-  3
-  2
-  2



The Jarrah



Home Size

House	108 m ²
Alfresco	13 m ²
Carport	36 m ²
Porch	7 m ²

Features

- ✓ Reverse cycle split system airconditioner to living area
- ✓ Ceiling fan to bedroom 1
- ✓ 600mm hotplate, wall oven & canopy rangehood
- ✓ Stone bench tops
- ✓ Soft close drawers & cupboards
- ✓ LED lighting throughout
- ✓ Heat pump hot water system
- ✓ Vinyl plank flooring throughout
- ✓ Ceramic tiling to wet areas
- ✓ Skirting boards throughout
- ✓ Roller blinds to all opening windows and sliding doors
- ✓ Flyscreens to all windows and sliding doors
- ✓ Wall and ceiling insulation
- ✓ Clothesline
- ✓ Garden shed



For further information:

Norm Jones, 0403 626 556
 njones@edenlife.com.au
 www.edenlife.com.au



3



2



2