

The Jarrah (A)



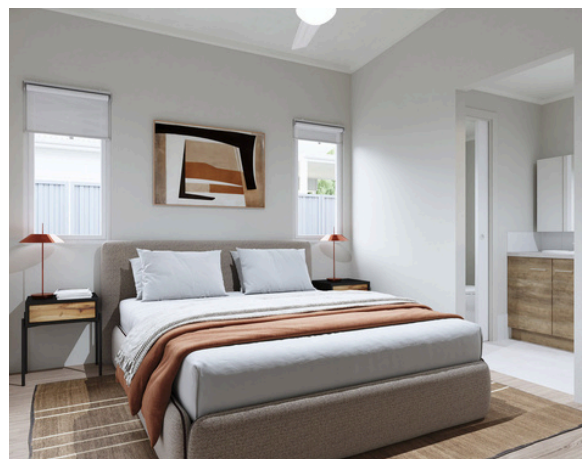
3



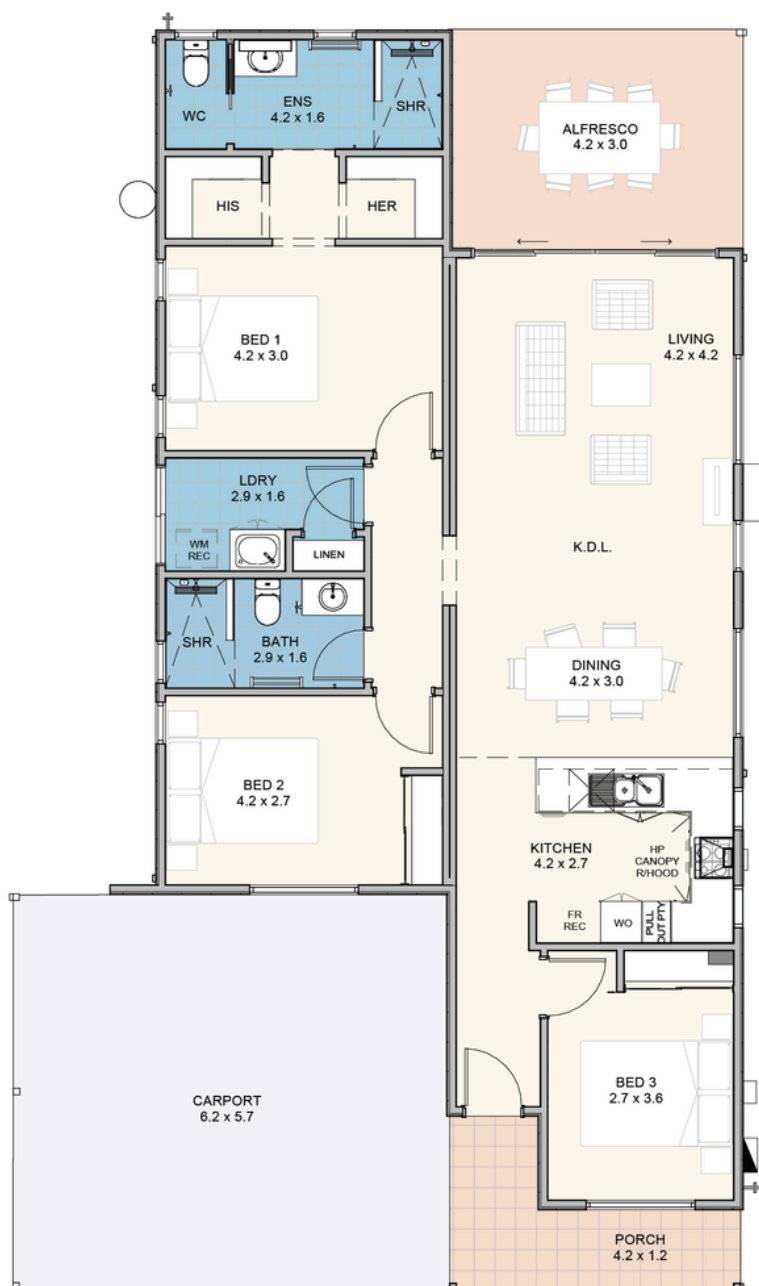
2



2



The Jarrah (A)



Home Size

| | |
|----------------|--------------------|
| House | 108 m ² |
| Alfresco | 13 m ² |
| Carport | 36 m ² |
| Porch | 7 m ² |

Features

- ✓ Reverse cycle split system airconditioner to living area
- ✓ Ceiling fan to bedroom 1
- ✓ 600mm hotplate, wall oven & canopy rangehood
- ✓ Stone bench tops
- ✓ Soft close drawers & cupboards
- ✓ LED lighting throughout
- ✓ Heat pump hot water system
- ✓ Vinyl plank flooring throughout
- ✓ Ceramic tiling to wet areas
- ✓ Skirting boards throughout
- ✓ Roller blinds to all opening windows and sliding doors
- ✓ Flyscreens to all windows and sliding doors
- ✓ Wall and ceiling insulation
- ✓ Clothesline
- ✓ Garden shed



For further information:

Norm Jones, 0403 626 556

njones@edenlife.com.au

www.edenlife.com.au

