

# The Banksia



2



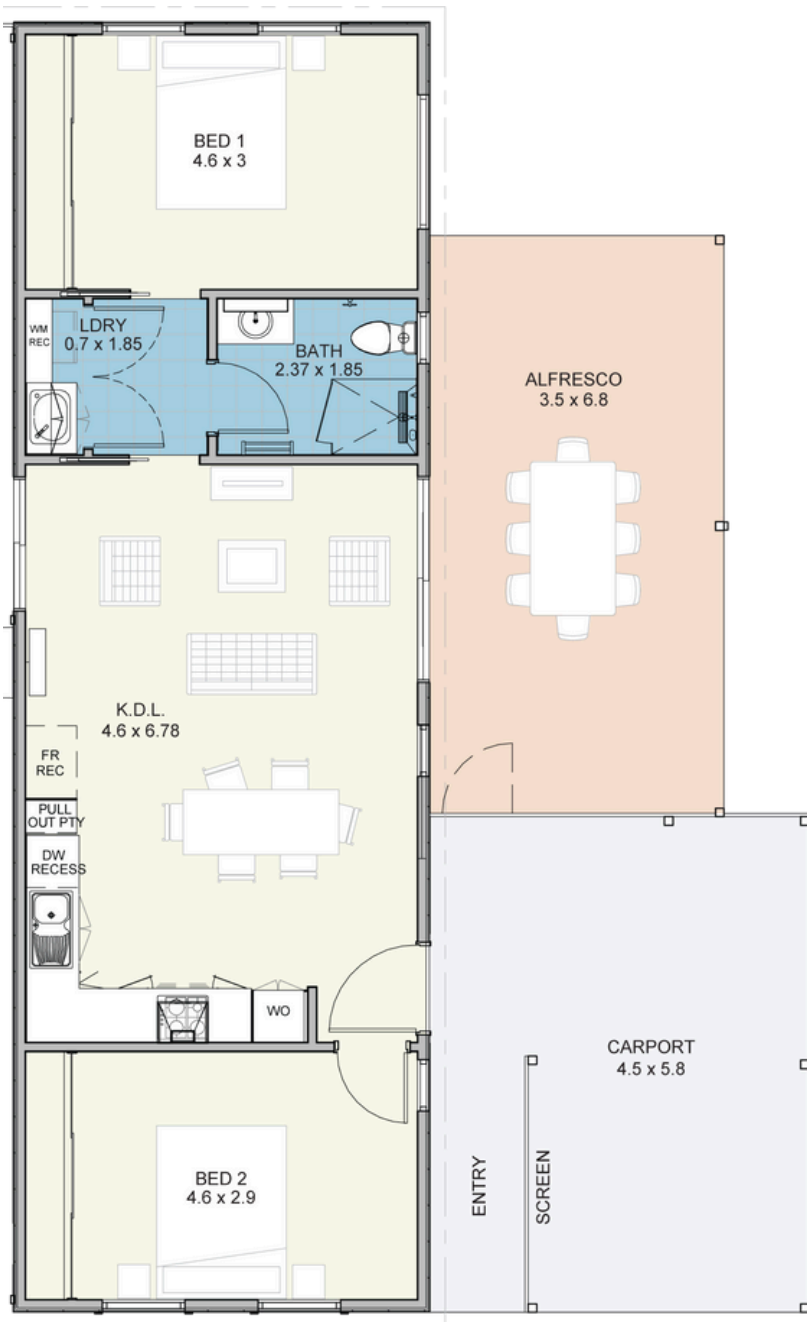
1



1



# The Banksia



## Home Size

House .....	72 m <sup>2</sup>
Alfresco .....	24 m <sup>2</sup>
Carport .....	26 m <sup>2</sup>

## Features

- ✓ Reverse cycle split system airconditioner to living area
- ✓ Ceiling fan to bedroom 1
- ✓ 600mm hotplate, wall oven & canopy rangehood
- ✓ Stone bench tops
- ✓ Soft close drawers & cupboards
- ✓ LED lighting throughout
- ✓ Heat pump hot water system
- ✓ Vinyl plank flooring throughout
- ✓ Ceramic tiling to wet areas
- ✓ Skirting boards throughout
- ✓ Roller blinds to all opening windows and sliding doors
- ✓ Flyscreens to all windows and sliding doors
- ✓ Wall and ceiling insulation
- ✓ Clothesline
- ✓ Garden shed



For further information:

Norm Jones, 0403 626 556  
njones@edenlife.com.au  
www.edenlife.com.au



2



1



1

Simplify Life and Start Living

Updated August 2025

Disclaimer: Edenlife reserves the right to change the information in this publication at any time without notice.

Images are artists impression only and subject to change. Landscaping is for illustrative purposes only and may not reflect final landscaping.