

The Ironbark

2 

1.5 

2 

1 



Artist impression only

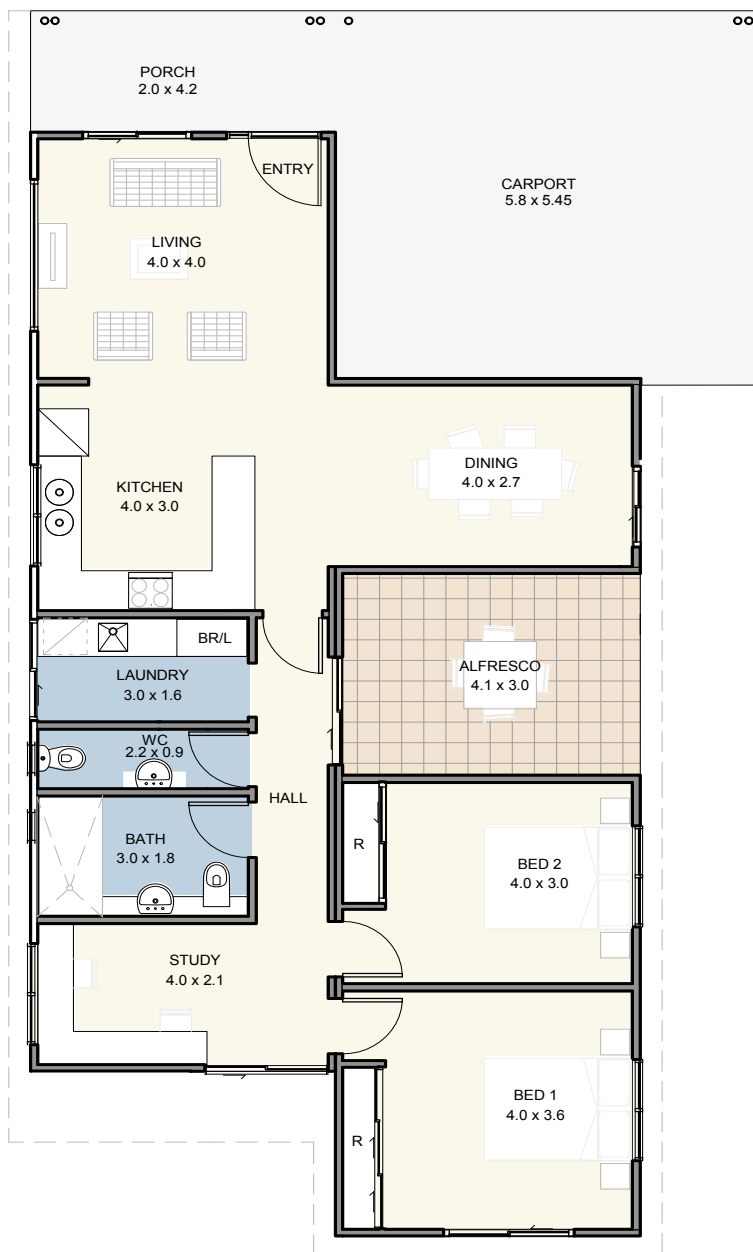
Finished & ready to move in

- Quality Floorcoverings throughout
- Fully painted inside & out
- Front and Rear landscaping and reticulation
- Fencing & Gates



EDENLIFE[®]
BYFORD

The Ironbark



Specifications

House	99m ²
Alfresco	12m ²
Carport	34m ²
Porch	9m ²

Features

- Contemporary skillion roof design
- Raked ceilings
- Reverse cycle split system aircon to living
- Ceiling fan to B1
- 600m hotplate/wall oven & canopy rangehood
- Stone benchtops
- Soft close drawers and cupboards
- LED lighting throughout
- Instantaneous hot water system
- Carpet to bedrooms
- Vinyl planking to living areas
- Ceramic tiling to wet areas
- Skirting boards throughout
- Roller blinds to all opening windows and sliding doors
- Flyscreens to all windows and sliding doors
- Wall & Ceiling Insulation
- Clothesline
- Garden Shed



Updated April 2024
Disclaimer: Edenlife reserves the right to change the information in this publication at any time without notice.

For further information

T 08 9423 5131
E live@edenlife.com.au

www.edenlife.com.au


EDENLIFE[®]
BYFORD