

# The Jarrah

3 

2 

2 



*Artist impression only*

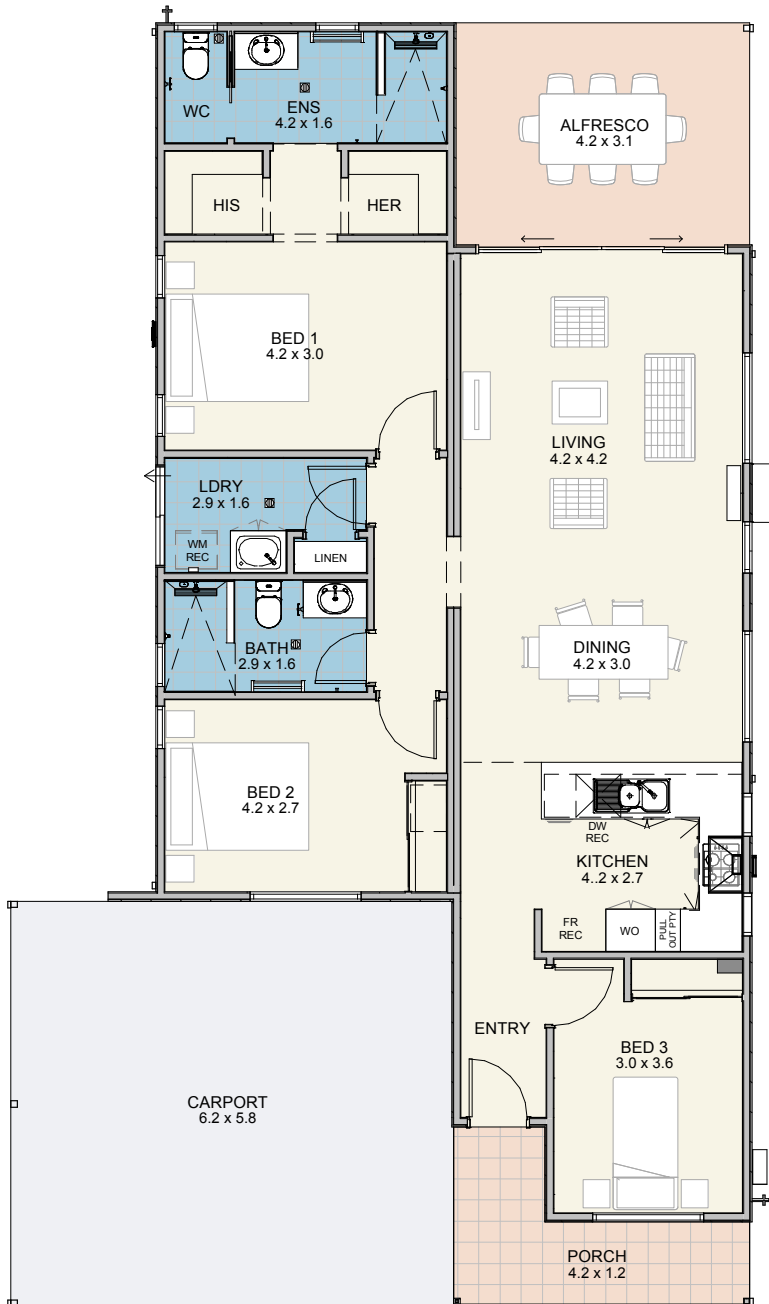
## Finished & ready to move in

- Quality Floorcoverings throughout
- Fully painted inside & out
- Front and Rear landscaping and reticulation
- Fencing & Gates



**EDENLIFE**<sup>®</sup>  
BYFORD

# The Jarrah



## Specifications

House .....	108m <sup>2</sup>
Alfresco .....	13m <sup>2</sup>
Carport .....	36m <sup>2</sup>
Porch .....	7m <sup>2</sup>

## Features

- Contemporary skillion roof design
- Raked ceilings
- Reverse cycle split system aircon to living
- Ceiling fan to B1
- 600m hotplate/wall oven & canopy rangehood
- Stone benchtops
- Soft close drawers and cupboards
- LED lighting throughout
- Instantaneous hot water system
- Carpet to bedrooms
- Vinyl planking to living areas
- Ceramic tiling to wet areas
- Skirting boards throughout
- Roller blinds to all opening windows and sliding doors
- Flyscreens to all windows and sliding doors
- Wall & Ceiling Insulation
- Clothesline
- Garden Shed



Updated April 2024  
 Disclaimer: Edenlife reserves the right to change the information in this publication at any time without notice.

For further information

T 08 9423 5131  
 E [live@edenlife.com.au](mailto:live@edenlife.com.au)

[www.edenlife.com.au](http://www.edenlife.com.au)



**EDENLIFE**<sup>®</sup>  
 BYFORD