

The Wren

3 

2 

2 



from
\$432,500

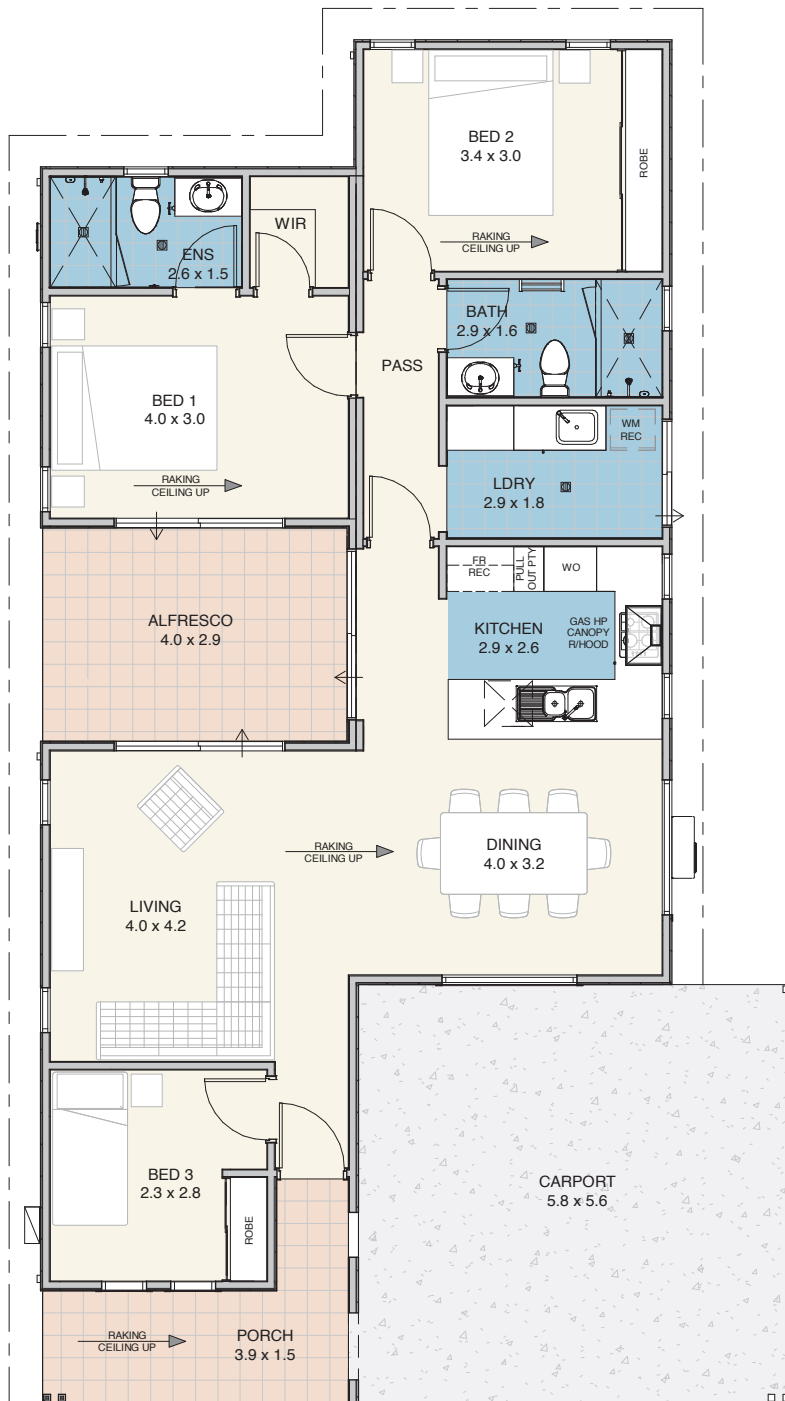
A place to call home

An entertainers delight with direct access to the alfresco from the living area and the kitchen. The master suite features a WIR, ensuite and direct access to the alfresco. Bedroom 2 has a wall-to-wall BIR robe and, at the front of the home, a third bedroom provides yet another option. The living, dining, kitchen and alfresco all flow together, creating a great zone to entertain or relax.



EDENLIFE[®]
AUSTRALIND

The Wren



Specifications

House	104m ²
Alfresco	12m ²
Carport	32m ²
Porch	8m ²

Features

- Reverse cycle split system air-conditioning unit to living area
- Natural gas hotplate & fan forced electric oven
- Continuous flow hot water unit
- Full internal & external painting
- Built in robes to bedrooms
- Carpet to bedrooms
- Vinyl planking to living areas
- Flyscreens to windows
- Blinds to windows
- LED lighting throughout
- Tiled splashback to kitchen
- Soft close drawers throughout
- Stone benchtops
- Foldaway clothesline
- Full insulation



Updated 27th March 2023

Disclaimer: Edenlife reserves the right to change the information in this publication at any time without notice.

For further information

T 08 9423 5131

E live@edenlife.com.au

www.edenlife.com.au



EDENLIFE[®]
AUSTRALIND