

The Sandpiper

2 

1.5 

2 

1 



from
\$419,900

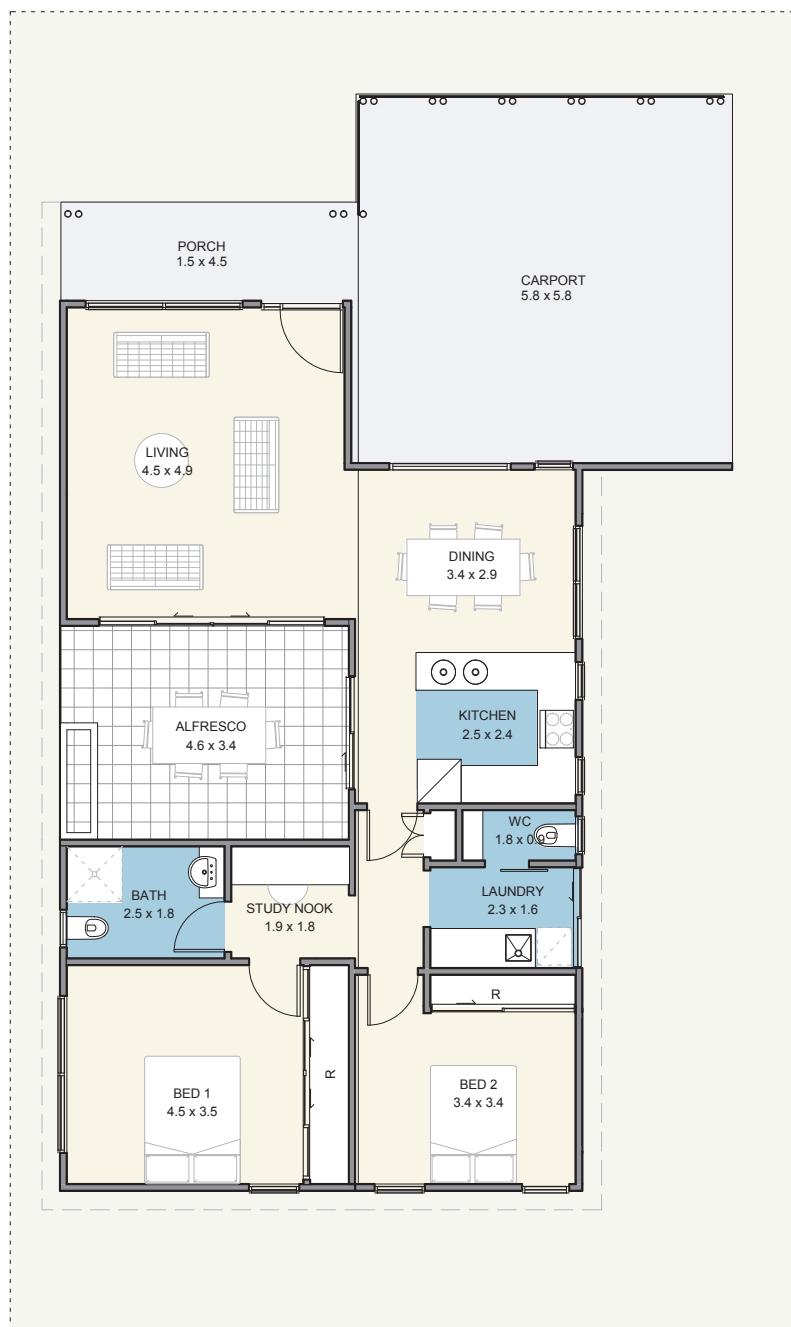
A place to call home

With the kitchen directly accessing the alfresco, this home is perfectly designed for entertaining. The ideal design flows through to the rest of the home with both bedrooms located at the rear, providing peace & privacy, with a generous living area, separate dining adjacent to the kitchen and a study nook.



EDENLIFE[®]
AUSTRALIND

The Sandpiper

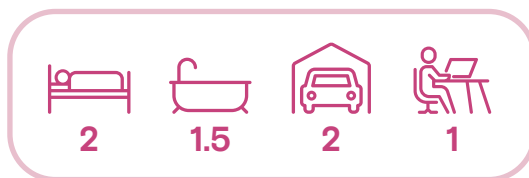


Specifications

| | |
|----------------|------------------|
| House | 92m ² |
| Alfresco | 15m ² |
| Carport | 34m ² |
| Porch | 7m ² |

Features

- Reverse cycle split system air-conditioning unit to living area
- Natural gas hotplate & fan forced electric oven
- Continuous flow hot water unit
- Full internal & external painting
- Built in robes to bedrooms
- Carpet to bedrooms
- Vinyl planking to living areas
- Flyscreens to windows
- Blinds to windows
- LED lighting throughout
- Tiled splashback to kitchen
- Soft close drawers throughout
- Stone benchtops
- Foldaway clothesline
- Full insulation



Updated 27th March 2023

Disclaimer: Edenlife reserves the right to change the information in this publication at any time without notice.

For further information

T 08 9423 5131

E live@edenlife.com.au

www.edenlife.com.au



EDENLIFE[®]
AUSTRALIND