

# The Cormorant

2 

2 

2 



from  
**\$429,500**

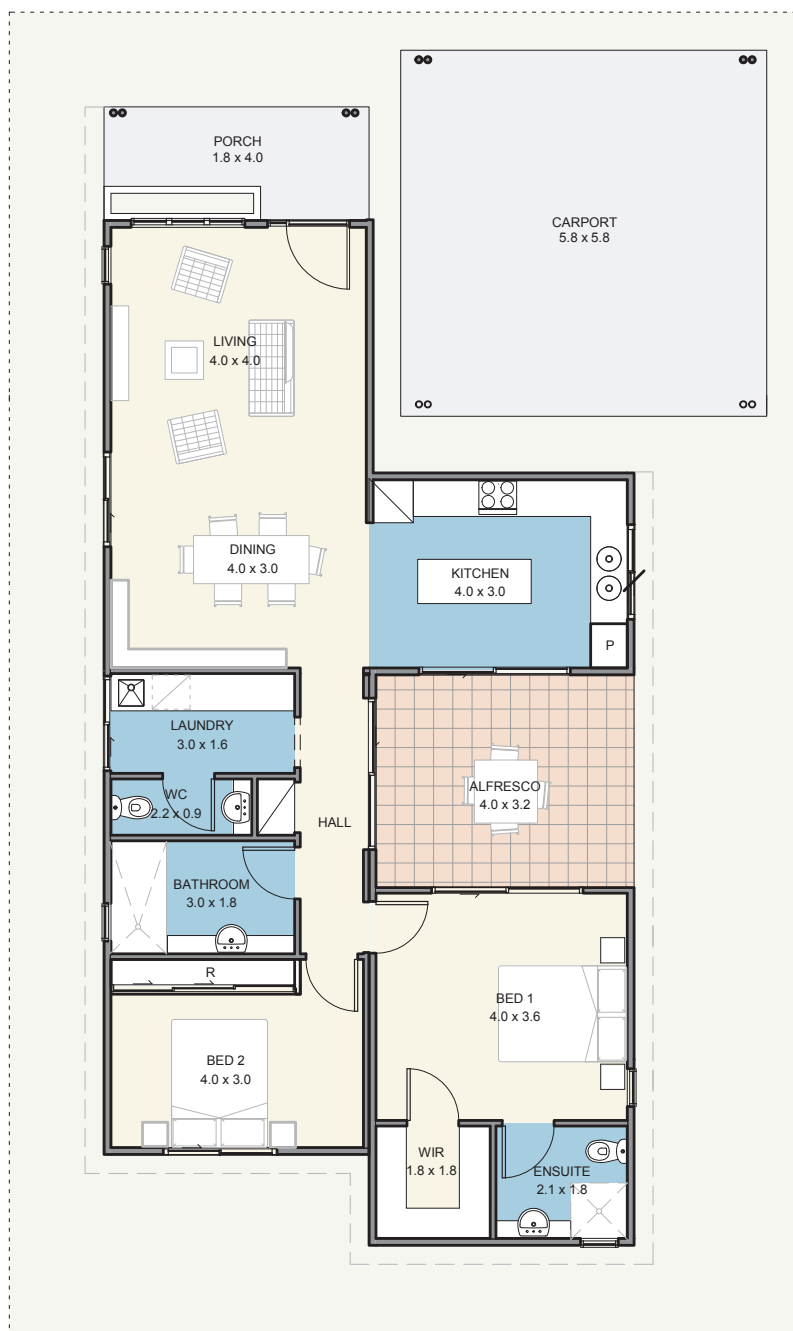
## A place to call home

Boasting a master bedroom with a WIR and ensuite, the rest of The Cormorant offers spacious internal & external living from the generous 2nd bedroom, living and dining to the alfresco. With both bedrooms positioned at the rear of the house, away from the living areas, peace & privacy are assured. The kitchen, bathroom and laundry are also well proportioned and well located.



**EDENLIFE**<sup>®</sup>  
AUSTRALIND

# The Cormorant



## Specifications

House .....	101m <sup>2</sup>
Alfresco .....	13m <sup>2</sup>
Carport .....	34m <sup>2</sup>
Porch .....	7m <sup>2</sup>

## Features

- Reverse cycle split system air-conditioning unit to living area
- Natural gas hotplate & fan forced electric oven
- Continuous flow hot water unit
- Full internal & external painting
- Built in robes to bedrooms
- Carpet to bedrooms
- Vinyl planking to living areas
- Flyscreens to windows
- Blinds to windows
- LED lighting throughout
- Tiled splashback to kitchen
- Soft close drawers throughout
- Stone benchtops
- Foldaway clothesline
- Full insulation



Updated 27<sup>th</sup> March 2023

Disclaimer: Edenlife reserves the right to change the information in this publication at any time without notice.

For further information

T 08 9423 5131

E [live@edenlife.com.au](mailto:live@edenlife.com.au)

[www.edenlife.com.au](http://www.edenlife.com.au)



**EDENLIFE**<sup>®</sup>  
AUSTRALIND